

## CONTROL UNIT USB1 for safety valves type SiZ 2507

Offered control unit type **USB** is designed to control full stroke spring loaded safety valves of open type design **SiZ 2507**.

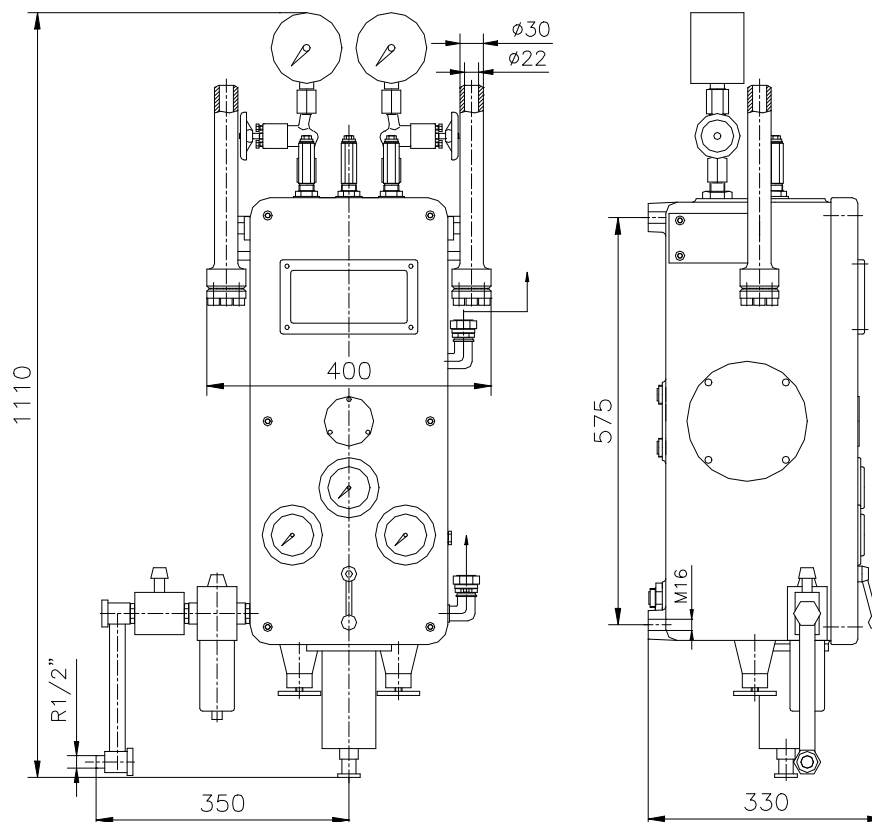
Depending on valve opening pressure ( setting ) it is manufactured in following versions :

- **USB1A060** – scope of setting:     **0 – 60 bar,**
- **USB1A160** – scope of setting:     **60 – 160 bar,**
- **USB1A250** – scope of setting:     **160 – 250 bar.**

### Operating data

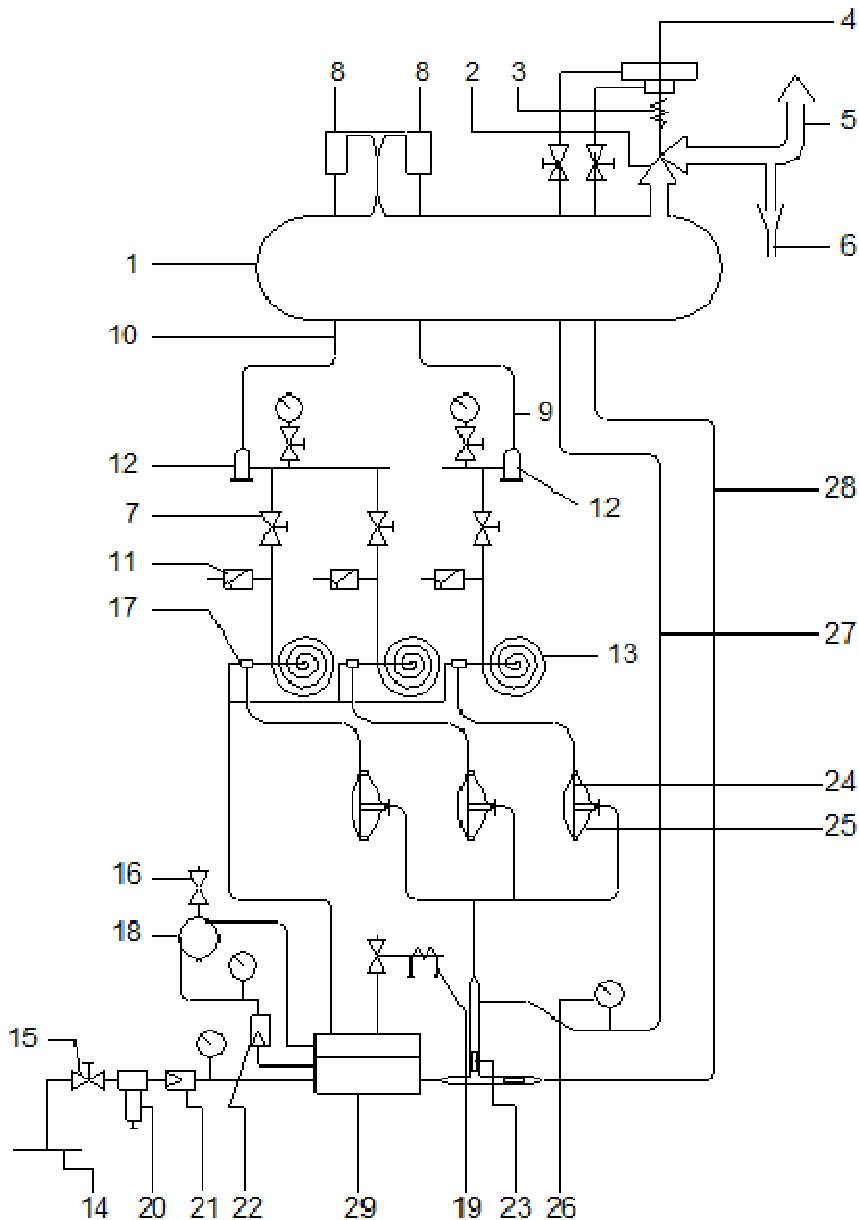
Operating medium	<b>compressed air</b>
Air consuming / normal operation - closed safety valve /	<b>about 0,1 m<sup>3</sup>/h</b>
Air consuming / normal operation - open safety valve	<b>about 25 m<sup>3</sup>/h</b>

### Dimensions and weights



**Weight USB = 68 kg**

## Diagram of control unit USB



1. Protected object
2. Safety valve
3. Valve main spring
4. Pneumatic operator
5. Discharge line
6. Discharge line drainage
7. Shut-off valves
8. Impulse nozzles
- 9,10. Pressure tapping lines
11. Check valves
12. Strainers
13. Bourdon tubes
14. Compressed air installation
15. Shut-off valve
16. Cock
17. Setting valves
18. Separator
19. Electromagnetic valve
20. Filter
- 21, 22. Reducing valves
23. Reducer
24. Control valve diaphragm
25. Control valve
26. Above piston pressure manometer
27. Air line above the piston
28. Air line under the piston
29. Distributor